

Your platform for HR-surveys - A part of Xact

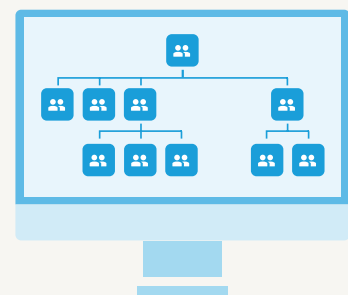


PeopleXact is your solution for measuring, creating, and developing well-being, engagement, and a sustainable work environment in your organization.

With a user-friendly interface, PeopleXact simplifies the work of both engagement and well-being surveys, workplace assessments (WPA), and ongoing pulse surveys, and allows you to gain a deeper understanding of the organization with just a few clicks.

What you get as an hr manager:

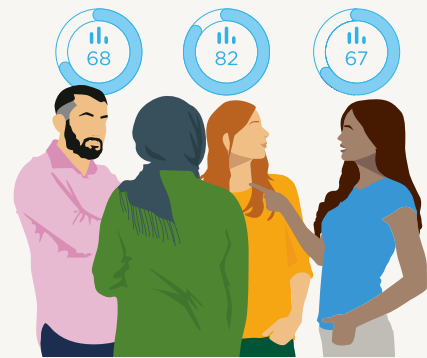
- a thoroughly tested, research-based questionnaire for engagement surveys - ready to be sent out.
- The ability to add your own supplementary questions, which contribute to uncovering organization-specific factors and make the survey particularly relevant to your employees.
- A tool for easily conducting a workplace assessment (WPA) with a questionnaire that meets the requirements of the Danish Working Environment Authority.
- The ability to conduct ongoing pulse surveys that make it easy to take the temperature of the organization and follow up on focus areas.
- The ability to choose which departments and colleagues should participate in the surveys.
- A live dashboard, that tracks response rate progress down to the department level.
- An automated schedule for distribution, reminders, and completion.
- Automatic distribution via email with a link and the option to choose SMS, e-Box, or physical login letter.
- Dynamic and user-friendly web reporting in real-time - available the moment the response period ends.
- Download PowerPoint presentations for all departments.
- Get a comprehensive, fast, and visual overview of the organization's engagement in an easy-to-read heatmap.
- Access to Ramboll's HR experts and organizational psychologists in the form of a knowledge bank where we have collected our experiences with measuring employee engagement.
- Secure handling of personal data — read about [GDPR](#)



Your platform for HR-surveys - A part of Xact

What you get as a manager:

- Full overview of your department's engagement and well-being in a comprehensible heatmap
- Dynamic reporting that shows your results and an comparison previous surveys. External benchmarks by industry and country, as well as to the overall organization's results.
- Department-specific strengths and focus areas selected based on employee responses.
- Concrete action plans and reflection questions that help you initiate the right actions.
- Option to access PowerPoint presentations, specifically tailored for dialogue with employees.
- Access to a knowledge bank containing everything from guidance on how to conduct dialogue meetings in your department to background articles on engagement.



All gathered in one modern and user-friendly platform.

With Ramboll by your side



When you choose PeopleXact, you also choose Ramboll. This means that Ramboll's experienced consultants assist you with the setup of the system - and that you always have access to guidance and advice.

Counseling and education

Our consultants offer ongoing sparring and adaptation to the reality you need to navigate - regardless of complexity. This can be in the form of result presentations, on-site or online education and coaching services, where our experts work closely with you to examine your results and unlock the potential for improvements in your organization.

With PeopleXact, you get a simple and user-friendly solution that is built on research and solid experience with HR surveys, which helps your organization create employee engagement, development, and better results.

Contact us to hear more.